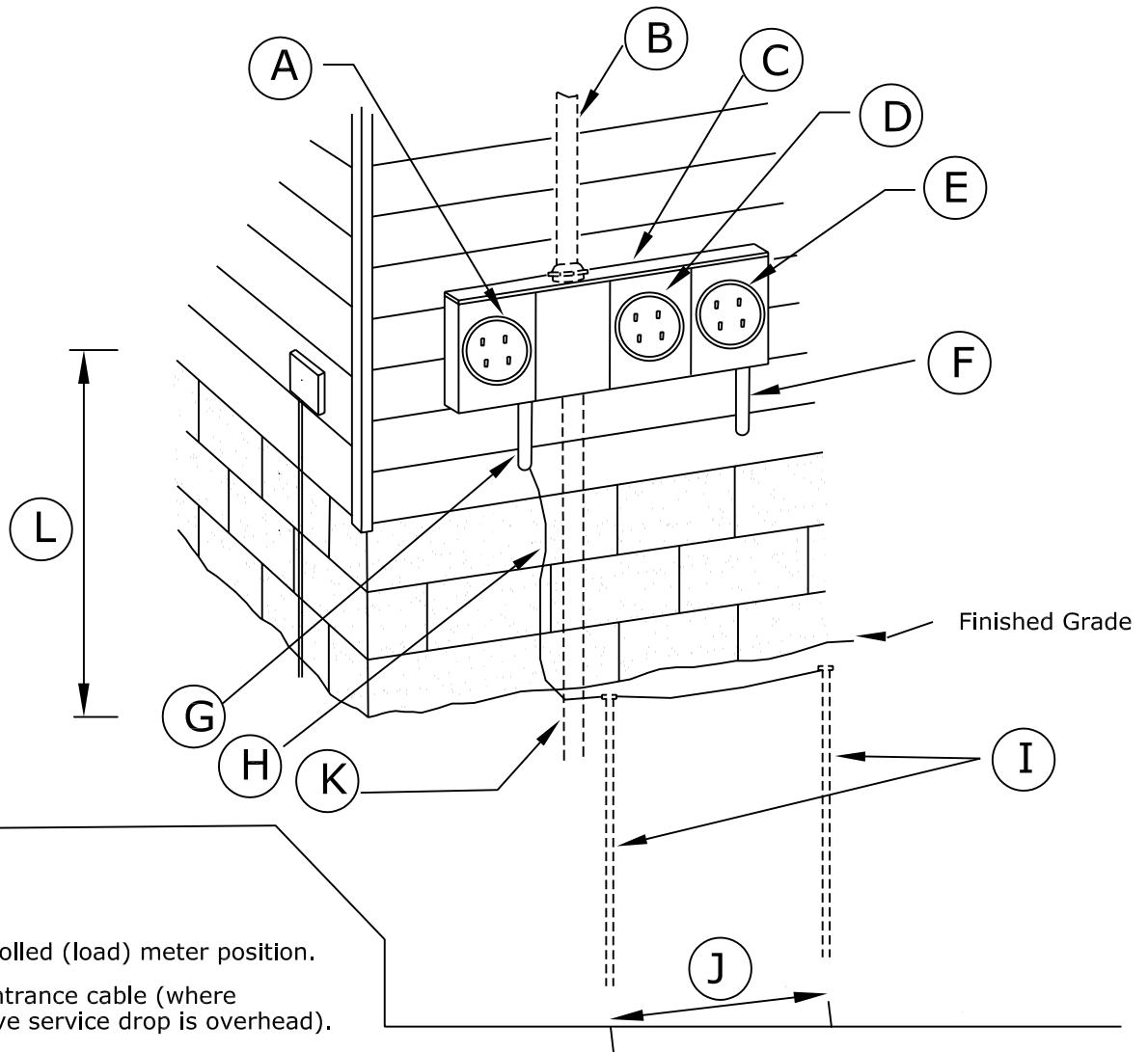


# ETS INSTALLATION (TYPICAL)

-An inspection by a Municipality approved inspector is required (per UCC code).

-ALL EQUIPMENT SHOWN WILL BE PROVIDED AND INSTALLED BY MEMBER EXCEPT WHERE NOTED.



- (A) Non-controlled (load) meter position.
- (B) Service entrance cable (where Cooperative service drop is overhead).
- (C) 3 position meter base (provided by the Cooperative and installed by the member). May be used for overhead or underground service drops.
- (D) Center meter position (Do Not Use). Reserved for installation of Load Control Switch. (Cooperative provides and installs the switch).
- (E) Controlled (heating load) meter position.
- (F) Service entrance cable to controlled (heating) panel. 200 amp maximum capacity.
- (G) Service entrance cable to non-controlled panel. Sized to load.
- (H) Grounding conductor. #6 copper to approved ground. (This wire will ground both panels, bonding will be between the panels; external of either panel). (Do not connect to meter base).
- (I) Ground rods (2 required) (5/8" galvanized steel or 1/2" copper - 8' long) and ground clamps for #6 copper (see H).
- (J) Ground rod separation - 6' minimum.
- (K) Service cable riser conduit (where Cooperative service drop is underground). (Provided and installed by the member).
- (L) Meter base height - 5' to 5'6".

Revised 11/17/04 by LB

**FIGURE 10**