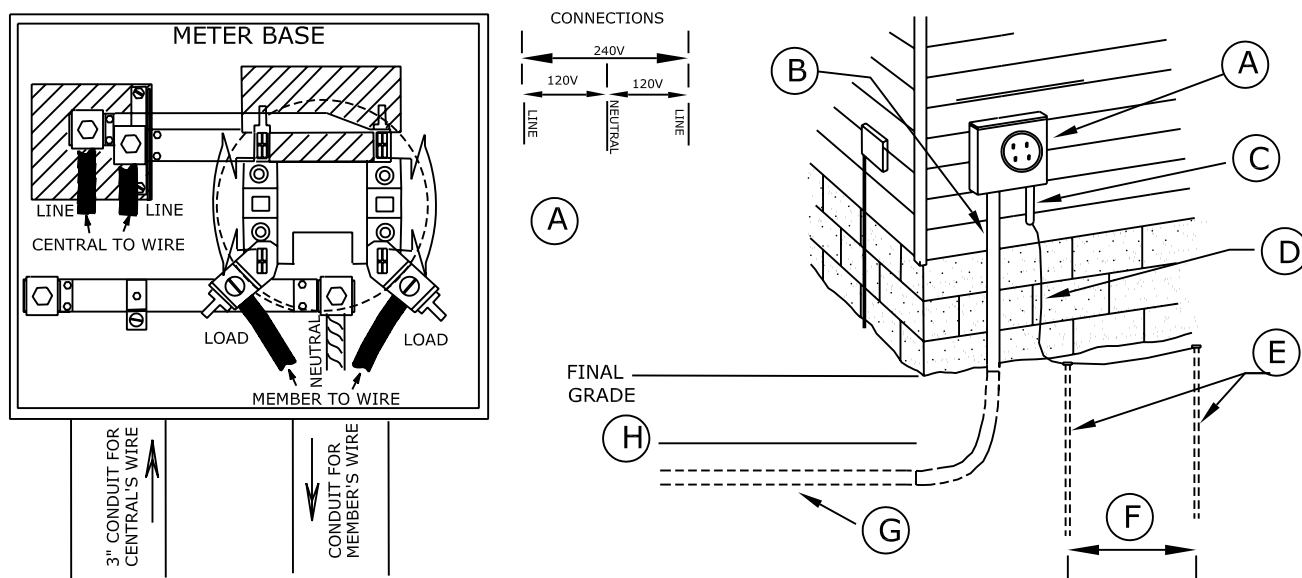


UNDERGROUND PERMANENT SERVICE

- > An Inspection by a Municipality approved inspector is required (per UCC code).
 - > Cooperative service drop will have a maximum distance of 250 ft. when originating from a pole mounted transformer, or 300' when originating from a pad mount transformer.
 - > Site should be graded to within 6" of final grade prior to trenching.
 - > Member must excavate trench for service cable from transformer to meter, provide 3" PVC Schedule 40 or DB 60 rigid electrical conduit the entire length of the ditch including 36" radius sweep and 3" Schedule 80 riser conduit into the meter base with a 1/2" min. diameter pull rope inside. Leave the last joint of conduit and a 36" radius sweep lay at the pole for the Cooperative to install. (A 1/4" weep hole drilled above ground line of final grade is suggested).
 - > A fee will be charged for underground service. This will be invoiced after service has been requested and must be paid prior to installation.
 - > Telephone, television and other communication lines may be installed in the same trench, however, require a minimum of 12" separation.
- *Water, sewer, and gas lines may NOT be placed in the ditch.
- > ALL EQUIPMENT SHOWN WILL BE PROVIDED AND INSTALLED BY MEMBER EXCEPT WHERE NOTED.



- (A) Meter base: 200 AMP min. capacity, ringless, min. of NEMA type 3R design, weather-tight, with side mounted by-pass horn-type socket lugs which must accept 4/0 conductor, & knockouts for 3" conduit. Installed at a minimum height of 3ft.
- (B) 3" PVC Schedule 80 service wire riser conduit into bottom of meter base.
- (C) Conduit & entrance conductor from meter base to panel will be sized according to service panel.
- (D) Grounding conductor-#6 bare copper to approved ground.(Do not connect to meter base).
- (E) Two-5/8" galvanized steel or 1/2" copper - 8 ft. long ground rods and ground clamps for #6 copper.
- (F) Ground rod separation must be minimum of 6 ft.
- (G) 3" Schedule 40 or DB 60 rigid PVC electrical conduit the entire length of the ditch including 36" radius sweep at each end (A 1/4" weep hole drilled above ground line of finished grade is suggested). Member will connect at meter base and Cooperative will connect at pole. Conduit depth will be 30" to 36".
- (H) Underground cable caution tape to be installed 12" above conduit.

REVISED 2/3/05 BY LB

FIGURE 7