

Power Lines

WWW.CENTRAL.COOP
P.O. BOX 329
PARKER, PA 16049



Central Electric Cooperative, Inc.
A Touchstone Energy Cooperative

The power of human connections



ISSUE NO. 7 YOUR CENTRAL ELECTRIC COOPERATIVE NEWS CONNECTION JULY 2008

"Watts" Inside

Sign up for the Annual Meeting, Page 3

Learn how to prevent electrical hazards this summer, Page 3

CEC Board of Director Nominees, Page 4-5

Useful tips from Ken's Kilowatt Korner, Page 5

Fourth of July hours announced, Page 6



Don't forget to check out the Recipe of the Month, Page 6

Board of Directors

Richard L. Weaver
President/Allegheny Director

Margery S. Terwilliger
Vice President

Althea M. Smith
Secretary/Treasurer

James M. Burd
Robert F. Schroth
Robert F. Sterrett
Bette D. Walters

Service Comes Naturally Here

When I started working at the cooperative (more than a few years ago) I was a recent college graduate and had basically one thought: get a job, earn a paycheck, and buy a new car. (OK, that's three thoughts, but they're related.) I wanted a car, nicer than the one I had been patching together for several years, so that it would pass inspection. My motivation when I took my first job as a work order clerk at the cooperative was that simple. I didn't see Central Electric Cooperative as anything other than an employment opportunity. At the time I was not being motivated by the desire to spend my career working for a socially responsible, consumer/community oriented business, I just wanted a job.

That changed! As I worked at the co-op I learned about its ownership structure, non-profit nature, and consumer orientation. I realized that the cooperative was more than just another business.



Larry Adams
CEO & General Manager

This one genuinely cared about serving its customers. Only they weren't customers, they were and still are, members. And the "profits" the co-op earns are refunded back to the members who contributed them. Over time, I have come to recognize how much this dedication to customer service is a result of the cooperative ownership structure, which naturally produces a customer-centric business. How refreshing!

Structured for Consumer Orientation

The utility is organized and incorporated as a non-profit rural electric cooperative under both state and federal laws. Rural

See Service/Page 2


A Touchstone Energy® Cooperative
The power of human connections®

Service/ From Page 1

electric cooperatives were formed to provide electric service in areas not being served. The original motivation for the way rural electric cooperatives are structured was to get service into unserved areas, not for profit. However, as you look at the structure that was necessary to extend service to areas that were not economical to serve on a for-profit basis, the consumer orientation naturally follows.

The cooperative is owned by the people it serves. This is what makes the co-op's consumers, members. It is overseen by a board of directors elected from, and by the membership, the people using its services. This process takes place over the next month as part of the Annual Meeting. The members of the board come from your ranks, are customers of the cooperative, and are your neighbors. It is natural for them to come to the board with a strong orientation toward consumer service. That is why you have seen Central continue to invest

It's also why when you talk to a cooperative employee, you likely find them very interested in meeting your needs. They recognize that you are one of the owners of the business that employs them, and a service attitude is one of our criteria when hiring. I believe you will find the cooperative more service minded than any other business. The results of the member surveys we conduct twice a year support this as you consistently give the co-op very high marks for service and the manner in which its employees conduct themselves.

So It's Natural and Rewarding

My point in discussing the structure of the cooperative is to show that this leads to ensuring a service-oriented culture. Service is just as great a motivator in running the business for the board and its employees as is conducting the business in an efficient and productive manner. And for me, personally, when I found employment at the cooperative, I got not only a place to work, to earn a living and raise a family, but also a career which offers a lot of job satisfaction. While most businesses are first about getting the customers' money, this one is first about providing the members/owners with service. That helps make it a rewarding place to work.

I hope you will participate in the election and Annual Meeting next month to help ensure this remains a consumer oriented organization.

THE COOPERATIVE IS OWNED BY THE PEOPLE IT SERVES.

significant amounts in its distribution system while profit oriented utilities reduced that investment during the time rate caps were in place for the transition to consumer choice. The policies by which we operate the business on a daily basis are approved by the board of directors who have both a business owner and consumer perspective.

HIGH-SPEED ANYWHERE.



WildBlue - Give us a call!

Imagine getting internet access via satellite that's up to 30 times faster than dial-up! Packages start as low as \$49.95 per month.



CESCO
www.cescowildblue.com
1-866-945-6258
Call us today, or for more information, visit us online.

 **WILDBLUE**
Satellite Speed Internet.

Requires a clear view of the southern sky. Not available in all areas. Usage subject to WildBlue's Fair Access Policy. Speeds not guaranteed. WildBlue is up to 10X faster than dial-up. Downstream speed comparisons between ProPak can 42 kps dial-up. Monthly fees relate to the ValuePak. Prices subject to change. Equipment, monthly service fees, installation charges, taxes and minimum term commitments also apply. © 2005 WildBlue Communications, Inc. WildBlue, the WildBlue logo and Satellite Speed Internet are trademarks or registered trademarks of WildBlue Communications, Inc. Central Electric Services Cooperative is a wholly owned subsidiary of Central Electric Cooperative, Inc., provider of WildBlue Internet Services.



Prevent Electrical Hazards Around Water

- Keep outlets covered and dry near hot tubs, spas, and pools. New outlet covers are available that offer weather protection while a plug is inserted into the outlet.
- Keep cords and plugs away from hot tubs, spas, pools, and puddles. Never handle electrical items, plugs, or outlets when wet. If an electrical product falls into the water **DO NOT** reach into the water. Make sure you are dry and not in contact with water or metal surfaces, and unplug it immediately or shut off the circuit powering the item.
- Outlets on or near hot tubs, spas, and pools should be protected by a ground fault circuit interrupter (GFCI). Many older swimming pools that pre-date the introduction of GFCIs in the 1970s should be upgraded to add GFCI protection for branch circuits supplying power to underwater pool lights operating above 15 volts, and outlets within 20 feet of the pool.



Join us at the Annual Meeting!

Making reservations for the cooperative's Annual Meeting dinner on Aug. 22 at Whitehall Campgrounds near Emlenton is easy! All you have to do is complete and return the coupon before July 31. This will make sure we have enough chicken dinners for everybody attending. Just mail it in to: Central Electric Cooperative, Inc., Annual Meeting Dinner Reservation, P.O. Box 329, Parker PA 16049. Telephone reservations are also accepted by calling 1-800-521-0570. You will need to give your name, address, account number and phone number. Telephone reservation deadline is also July 31.



Name: _____

Address: _____

Account No: _____

Telephone No: _____

Please reserve _____ dinners for me and my family.
We will attend the Annual Meeting on August 22, 2008.

Special Parking Permit

Those who need to park close to the tabernacle may request a parking permit. Seventy-five permits will be available on a first-come basis. Call 1-800-521-0570 between 8 a.m. and 4:30 p.m. Monday thru Friday or write to Central Electric Cooperative, Inc., P.O. Box 329, Parker, PA 16049 for a permit.



CEC Board of Director Nominees

BUTLER COUNTY



Robert F. Schroth
3051 Old Route 422 East
Fenelton, PA 16034
Incumbent Nominee

Robert F. Schroth

The Butler County incumbent is Robert Schroth.

Bob has been a Central Electric Cooperative member for the past 58 years, and a cooperative director since 1988. Owner and operator of White's Garage along Old Route 422 near Fenelton, Bob also farms approximately 160 acres of land where he raises grain and beef cattle.

Bob is a member and former elder of the Saxonburg Memorial Presbyterian Church. He serves as notary public in the Fenelton area and is a member of the Butler County Inspection Association. A lifelong resident of Butler County, he belongs to William Miller Lodge 769. Bob has served as a Clearfield Township supervisor since 1996.

He and his wife, the former Alice Osterling of Butler area, have two daughters, Kathleen and Traci, and a son, Kenneth.



Jim H. Howell
266 Sandy Point Road
Emlenton, PA 16373
Prospective Nominee

Prospective Nominee: Jim H. Howell

Jim has been a Central Electric Cooperative member since 1997.

Jim is a retired police officer, serving on the Mt. Lebanon Police Department for 29 years. He is a graduate of the U.S. Air Force Police Academy, Allegheny Community College, and received his Bachelor of Arts degree in Administration of Justice from the University of Pittsburgh. He is a member of the Parker VFW Post 7073 and American Legion Post 598, the Parker-Allegheny Masonic Lodge 521, Syria Shriners (AAONMS), and other organizations.

Jim resides in Emlenton, PA.

CLARION COUNTY



Richard Weaver
219 Valley Road
Knox, PA 16232
Incumbent Nominee

Richard Weaver

Richard Weaver is Central's Clarion County incumbent nominee director.

Rick has been a Central Electric Cooperative member since 1978 and a cooperative director since 1988. A graduate of Keystone High School in Knox, Rick currently serves as Central's board president and voting delegate to Allegheny Electric Cooperative.

Rick owns and operates Weaver Excavating and Sewage Systems. He has been in business for 30 years, specializing in basement digging, sewage systems and land development.

Rick is married to the former Ruth Ann Henry, who is also a Knox area native. They have two daughters, April and Autumn.

They are members of the Grace Evangelical Congregational Church in Ninevah.



CEC Board of Director Nominees

(Clarion County Nominees continued)



MaryEllen Wilson
371 Packing Road
New Bethlehem, PA 16242
Prospective Nominee

Prospective Nominee: MaryEllen Wilson

MaryEllen Wilson has been a member of Central Electric Cooperative since 1995.

She is a 1982 graduate of Clarion University with a Bachelor of Science Degree in Education. In addition, she has completed post-graduate work in counseling at Slippery Rock University.

MaryEllen was employed for over 14 years as an elementary teacher before she left her profession in order to raise her family.

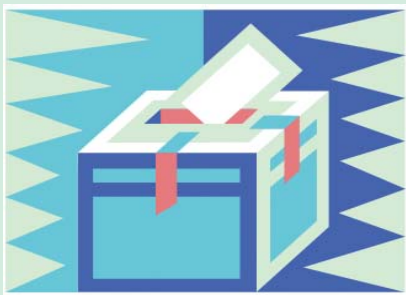
She is currently a substitute teacher. She resides on a farm near Curllsville with her husband and two sons.

Thank you!

Thank you to Central Electric Cooperative's 2008 nominating committee for reviewing, interviewing and nominating the candidates to fill the office of cooperative directors for Butler and Clarion counties. Nominating committee members were Harvey W. Loose, Donald F. Christy, Charles R. Schreffler, Dennis Lamb, and Carl E. Gadsby.

Voting is your right!

Look for your ballot in the mail and vote electronically, by mail, or in person at the Annual Meeting!



Ken's ilowatt corner



www.central.coop
Check it out!

By Ken Maleski
CEC Consumer
Marketing Representative



Swimming Pool Pumps

Operating a swimming pool pump eight hours a day can add up to a substantial amount of energy (close to \$30 per month). Here are some tips to keep you and your budget "cool":

Researchers found that cutting back on pump circulation times does not automatically mean the pool will get dirty.

Set the pump time clock to run three periods a day for an hour each time. Try hourly at 9 a.m., 1 p.m. and 9 p.m.

The right balance of chemicals in the water and brushing the pool walls will help keep it clean.

Following the above advice could save up to \$15 per month.

Turn pool pumps off during Peak Alert broadcasts.

Save on gasoline by staying at home in your own pool.
And save on electricity costs by following the above tips.

GO ELECTRIC
It's the SMART choice



Central Electric Cooperative, Inc.
A Touchstone Energy® Cooperative
The power of human connections



What's cooking?

No-Skill Fruit Tart

INGREDIENTS:

- 2 cups all-purpose flour
- 1/2 teaspoon salt
- 1 cup shortening
- 1/2 cup cold water
- 3 tablespoons sugar
- 2 tablespoons cornstarch
- 2 cups sliced fresh peaches
- 1 cup fresh blackberries



DIRECTIONS:

1. Preheat oven 450 degrees F.
2. Stir together flour and salt. Cut in shortening. Gradually stir in water until dough is wet enough to hold together. Knead dough, then place in refrigerator while preparing fruit.
3. Stir together sugar and cornstarch. Add peaches and blackberries, lightly coat the fruit.
4. Roll out the crust dough into a circle and place on flat baking sheet. Pile the fruit into the center of the dough, leaving 1 to 2 inches of exposed dough around the edge. Fold dough over the fruit, covering some of the fruit.
5. Bake for 25 to 30 minutes until crust is golden brown. Let cool, cut into wedges and serve.

If you liked this recipe visit www.allrecipes.com for more great seasonal treats!

Send Recipes To: codonnell@central.coop

CEC Staff

Larry S. Adams

CEO & General Manager

Dennis W. Beggs

Director of Finance

Stephanie Deal

Director of Human Resources & Administration

Lisa A. Hoover

Director of Consumer Services

Christina J. O'Donnell

Director of Communication & Marketing

Fred E. Terwilliger

Director of Engineering & Operations



A Touchstone Energy® Cooperative
The power of human connections®



Central Electric's office will be closed Friday, July 4, in observance of Independence Day. Normal business hours will resume Monday, July 7.

May contest winner:

Helen I. Hartman of Sarver

Congratulations!



Read Power Lines and

Read your issue of Central Electric Cooperative's Power Lines and win! It's simple — you can win a \$50 credit on your monthly electric bill by reading Power Lines and then completing the quiz that appears below. Answer the questions (answers are contained in each issue of Power Lines), then complete the quiz and personal information and return it with your bill payment.

Important Contest Rules:

1. The contest is open to all Central Electric Cooperative members with active accounts as of the drawing date.
2. Only one entry per member is permitted.
3. Employees and directors of Central Electric, along with members of their immediate families, are not eligible.
4. The winning entry will appear as a credit on the member's bill and may not be redeemed for cash.

Complete, clip and enclose the quiz and personal information below and return it with your monthly payment!



1. **True or False:** The Annual Meeting will take place on August 22, 2008.

Answer: _____

2. **True or False:** The Butler County incumbent is Richard Weaver.

Answer: _____

3. **True or False:** The cooperative is owned by the people it serves.

Answer: _____

Name: _____

Address: _____

Telephone number: _____ Account number: _____