



# Power Lines

Photo by Scott Weist of Slippery Rock

## Inside:

Are You Interested in Running for a Director's Seat?

Water Heater Program

## "Watts" Inside

Water Heater Program	3
Cold Stress Hazards	4
2022 Pole Inspections	4
Are You Interested in a CEC Director's Seat?	5
Italian Style Zucchini Quiche	6

## Board of Directors

Nancy Lendyak  
*President*

Kenneth Etzel  
*Vice President*

Althea Smith  
*Secretary/Treasurer*

John Campbell  
Kenneth Durrett  
Robert Smith  
Jody Weaver  
Richard Weaver

## Locally Governed

*by Matthew Boshaw, CEO & General Manager*

Central Electric Cooperative (CEC) is a private, not-for-profit, electric distribution cooperative. While that seems simple, there is a lot to unpack in that one-line description. Private meaning we are not a publicly traded company. Not-for-profit is self-explanatory and electric distribution describes the infrastructure and service we provide. With that said, by far the most important complex piece to unpack is cooperative.

A cooperative is a member-owned organization that is formed and governed by the members it serves to provide, in our case, electric service to our membership.

Cooperatives around the world operate according to the same set of seven principles and values adopted by the International Cooperative Alliance. These principles are a key reason electric cooperatives operate differently from other electric utilities — by putting

members first.

I have written about these principles in other articles, like Member Economic Control in describing the rotation of patronage capital, and Concern for Community in describing the various value-added programs we offer, to name a couple.

Today, I would like to highlight Democratic Member Control. As I mentioned, CEC is owned and governed by its membership. A group of eight members is elected from the membership, by the membership, to represent your interests in the operation of your cooperative. The board members must live in the county they represent to ensure that all members are represented, not just those in the most populated areas. Our membership has some pretty high expectations and we ask a lot of our board. Let me reintroduce your board of directors:

**Locally ... /Page 2**

## Locally Governed /From Page 1

### **Nancy Lendyak, Armstrong County**

Mrs. Lendyak, a CEC member since 1978 and a board member since 2014, currently serves as board president. She has a master's equivalency from Clarion University and is a retired Karns City teacher. She serves as a Griffith Morgan Scholarship Trustee and has served as a Clarion University Alumni board director.

### **Ken Durrett, Butler County**

Mr. Durrett, a CEC member since 1996, has served on the board since June 2009. He has over 30 years of business experience and has held senior level finance and executive positions within multiple companies. Mr. Durrett is currently helping small businesses improve profitability, obtain financing and achieve other financial objectives. He is a member of the American Institute of Certified Public Accountants and Financial Executives International.

### **Robert Smith, Butler County**

Mr. Smith has been a CEC member since 2013 and has served on the board since 2019. He has bachelors' degrees in chemistry and business from California University of Pennsylvania. He retired from MRC Global as the quality department's Global Director. Mr. Smith moved to the area from Charleston, West Virginia in 2013.

### **Jody Weaver, Clarion County**

Mr. Weaver has been a CEC member since 1976 and has served on the board since 2008. Mr. Weaver retired from First United National Bank in Fryburg after 43 years of service

and currently serves on their board of directors. He is also manager of Weaver Holdings, LLC.

### **Richard Weaver, Clarion County**

Mr. Weaver, a CEC member since 1978, has served on the board since 1988. He serves as CEC's representative on the Allegheny Electric Cooperative board. Mr. Weaver owns and operates Weaver Excavating and Sewage Systems.

### **John Campbell, Forest County**

Dr. Campbell, a CEC member since 1995, joined the board in 2021. Dr. Campbell has a bachelor's degree in electrical engineering from the University of Cincinnati, is a registered professional engineer in the state of Pennsylvania, has a master's in business administration from Duquesne University, and has a doctorate in dental medicine from the University of Pittsburgh. He worked for GTE Sylvania and Mobay Bayer as an electrical engineer. As a dentist, he had a family practice in Fryburg for almost 30 years. He is currently retired from both professions.

### **Althea Smith, Venango County**

Mrs. Smith has been a CEC member since 1979 and has served on the board since 1995. She currently serves as secretary and treasurer of the CEC board and as CEC's Pennsylvania Rural Electric Association director. She is retired from Venus Telephone Corporation.

### **Ken Etzel, Venango County**

Mr. Etzel has been a CEC member since 1973 and has served on the board since 2013 — currently

“You have selected a hard-working, dedicated group to represent you. I'd like to thank you for recognizing the importance of your votes and sending us a quality board.”

Matt Boshaw, CEO &  
General Manager

## Locally ... /From Page 2

serving as vice president. He earned a bachelor's degree from Clarion University and has a master's equivalency. He taught mathematics at Franklin Area High School for 35 years. He is now retired from teaching and runs a hobby farm.

Each CEC board member brings extensive and varied expertise to the boardroom. It will come as no surprise that these descriptions are not all inclusive, as these individuals have served your communities far longer than they have served on CEC's board.

This diversity of expertise, geography and opinion allows the board to give the appropriate level of thoughtful debate to the decisions that

impact our membership the most. This group spends a large amount of time on the business of the cooperative. A great indication of this is their engagement in continuing education and accreditation specific to the cooperative business model. Additionally, six of our eight board members have served as president, vice president or secretary/treasurer while on the board — with only the two shortest tenured members unable to serve in those roles yet.

Local control and governance is one of the most important principles we follow. You have selected a hard-working, dedicated group to represent you. I'd like to thank you for recognizing the importance of your votes and sending us a quality board.

## Meter Readings

with Laura Prosser

Member Energy Specialist



Cooperatives are unique in many ways and our Load Management Program is no exception. CEC works with our wholesale power supplier, Allegheny Electric Cooperative, and thirteen other electric cooperatives across Pennsylvania and New Jersey to reduce the demand for electricity during periods of peak demand to control electric rates.

Since 1986, the efforts of Allegheny and member cooperatives have saved nearly \$155 million in avoided power costs, by shifting the use of water heaters and other appliances to off-peak hours. This voluntary program improves system efficiency, cuts demand charges and reduces the need for new generating capacity.

How can you help? Purchase your next electric water heater from CEC. **Members can purchase a high-quality, professionally installed 50-gallon water heater for only \$500 (a \$1,200 value)!**

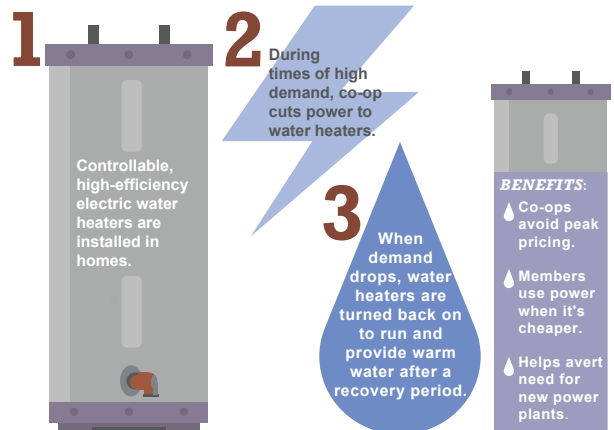
## Water Heater Program

When the tank is installed, so is a Demand Response Unit (DRU), which allows CEC to temporarily switch off power to the water heater when we are anticipating periods of high demand.

Members who already have an electric water heater can receive a \$100 bill credit for installing a DRU on the existing tank.

### WATER HEATER DEMAND RESPONSE

HOW IT WORKS...





## The Safety Linke



*Don't be a stranger, to electrical danger.*

### Cold Stress Hazards



Manager of Safety  
& Loss Control

**Dylan Linke**

People who live and work in cold environments face many hazards. Cold weather forces the body to work harder to maintain its temperature.

**Frostbite** is an injury caused by freezing. Frostbite causes loss of feeling and color in the affected areas — most often the nose, ears, cheeks, chin, fingers or toes. Frostbite can lead to permanent damage or amputation.

First aid for frostbite: Get the person into a warm area immediately. Do not walk on frostbitten feet to avoid further damage. Use warm water to heat the affected areas — hot water can burn the skin.

**Trench foot** is an injury to the feet resulting from prolonged exposure to wet conditions and cold temperatures. Wet feet lose heat 25 times faster than dry feet. To prevent heat loss, the body constricts blood vessels, shutting down circulation in the feet. Skin tissue begins to die due to the buildup of toxic products and lack of oxygen and nutrients.

First aid for trench foot: Remove any wet socks or boots. Dry feet and do not walk on them to avoid causing more damage.

**Hypothermia** is caused by long exposure to cold temperatures and the body losing heat faster than it

can be produced. Prolonged exposure to cold temperatures will exhaust the body's stored energy and result in an abnormally low body temperature. A low body temperature affects the brain, making the person unable to think clearly or move well.

First aid for hypothermia: Alert someone and get medical help right away. Move the person to a warm area. Warm the center of their body first — chest, neck, head and groin area. Use an electric blanket or skin-to-skin contact under blankets, clothing, towels or sheets. If the person is not breathing, begin CPR until the paramedics arrive on the scene.

#### **Safe Work Practices for Cold Environments**

- Eliminate or limit work as much as possible in extremely cold temperatures.
- Allow for acclimatization to cold conditions.
- Layer and keep clothing dry — remove any wet clothing or shoes and put on dry items.
- Take breaks in warm areas or vehicles as needed.
- Drink warm beverages to increase your core temperature.
- Monitor those around you — take them to a warm area if something is wrong.

### 2022 Pole Inspections

Contracted crews will begin inspecting poles on circuits originating from Clearfield and Cowansville substations in Armstrong and Butler counties.

CEC's contractor, Osmose Utilities Services, Inc., will begin work on March 13. CEC members, and others with CEC's electric poles on their property, may encounter inspection crews. Inspections typically include a visual inspection, sounding of the pole with a hammer and excavation

up to 18 inches around the base of the pole. Poles identified as having issues will either be addressed by Osmose or by CEC personnel. All Osmose and CEC employees carry company-issued identification. CEC respects property owners' rights and will complete the work as quickly and professionally as possible.

If you have any questions, please contact CEC's Assistant Operations Manager, Bill Betros at 800-521-0570 x 2209. Thank you for your cooperation.



## Are You Interested in a CEC Director's Seat?

As a member, you have a voice in who serves on CEC's eight-member Board of Directors. Every year, members elect two directors for a four-year term. Director seats are divided among the counties the cooperative serves. This year, resident members from Armstrong and Butler counties are invited to run for these two seats. To be eligible for nomination, you must be a CEC member in good standing, have a permanent residence in that county and meet other qualifications required by CEC's bylaws.

If you are interested in running for the board, you must return the below coupon or complete the online form by April 1. You will then receive a qualifications list, nominating petition (that must be signed by 20 CEC members), prospective director questionnaire and authorization form for a criminal background check. You must complete all of these items and return them to CEC's nominating committee by April 15 to be eligible to run for CEC's Board of Directors.

After the cooperative confirms your eligibility, you will attend an orientation meeting and meet with

the nominating committee for an interview. The committee then submits a list of the eligible candidates for placement on the ballot.

Nominee names, along with a photo and background information, are presented in the July issue of Power Lines. Cooperative members will vote by mail or Internet prior to the annual meeting, or vote by paper ballot on the day of the meeting, Aug. 19, 2022, prior to the meeting's commencement. Election results will be announced prior to adjournment.

More information about running for the board is available by visiting [www.central.coop](http://www.central.coop).

**Your board of directors has appointed a nominating committee to review prospective candidates interested in running for CEC director.**

**Committee members are:**

**Armstrong County**

**Harvey W. Loose**  
East Brady

**Forest County**

**Dennis Lamb**  
Tionesta

**Butler County**

**Joe Gibson**  
Parker

**Venango County**

**Carl E. Gadsby**  
Grove City

**Ronald Morrison**  
Cabot

**Ron Paranick**  
Cranberry

**Clarion County**

**James M. Reed**  
Fryburg

**Randy Tharan**  
Knox



If you are interested in being considered as a director nominee, please complete this coupon and return it by April 1, 2022 to:  
Central Electric Cooperative, Nominating Committee, PO Box 329, 716 Route 368, Parker, PA 16049.

Please send me a qualification list and petition requirements for being a director nominee to Central Electric Cooperative's Board of Directors.

Name: \_\_\_\_\_

Address: \_\_\_\_\_

Telephone: \_\_\_\_\_

County: \_\_\_\_\_ Account #: \_\_\_\_\_

## Recipe of the Month

### Italian Style Zucchini Quiche

#### Ingredients:

- 1 single layer pie crust
- 4 cups sliced zucchini
- 1/2 cup butter
- 1 cup chopped onion
- 1/2 cup fresh parsley or 2 tbsp parsley flakes
- 1/4 tsp garlic powder
- 1/4 tsp basil
- 1/4 tsp oregano
- 2 eggs, beaten well
- 8 ounces shredded mozzarella
- 2 tsp mustard, optional
- Salt and pepper to taste

#### Directions:

Preheat oven to 375 degrees. Place pie crust in a pie pan and cook for 5-10 minutes. Saute zucchini and onions in butter. Stir in parsley, garlic powder, basil, oregano, salt and pepper. Add in eggs and cheese. If desired, spread mustard on the pie crust before adding mixture. Spoon mixture into precooked pie crust. Bake for 20 minutes or until slightly browned.

*Thank you to Theresa and Michael Eury for submitting this recipe!*

## CEC Management Team

Matthew P. Boshaw  
CEO & General Manager

Chester Conti  
Director of Finance and  
Accounting/CFO

Christopher W. Kossman  
Director of Information Technology

Stephanie Deal  
Director of Human Resources

Fred E. Terwilliger  
Assistant General Manager/COO

Lisa A. Hoover  
Director of Member Services

## Read Power Lines and Win!

Last Issue's Winner:

**Steve Lindey of Slippery Rock**

Last Issue's E-Winner:

**Larry Wolfe of Tionesta**

Read Power Lines for a chance to win a \$25 credit on your monthly electric bill by completing and returning the quiz below. You can also have a chance at another \$25 bill credit by submitting a quiz online at [www.central.coop](http://www.central.coop).

If you don't have access to the Internet, indicate that on the quiz and we'll also enter you in the online drawing. Just complete and enclose the quiz and personal information below and return it with your monthly payment.

**1. True or False:** Local control and governance is one of the most important principles CEC follows.

**Answer:** \_\_\_\_\_

**2. True or False:** Members can purchase a high-quality 50-gallon water heater from CEC.

**Answer:** \_\_\_\_\_

**3. True or False:** Wet feet lose heat 25 times faster than dry feet.

**Answer:** \_\_\_\_\_

**How are we doing?** (no wrong answer)

\_\_\_\_\_  
\_\_\_\_\_  
\_\_\_\_\_

**Name:** \_\_\_\_\_

**Phone:** \_\_\_\_\_

**Acct. #:** \_\_\_\_\_



Central Electric Cooperative

A Touchstone Energy Cooperative

716 Route 368, P.O. Box 329, Parker, PA 16049

Newsletter Editor: Kessa Stydinger