

**Inside:  
Learn How To ...**

Enter Our Photo Contest

Attend Our 81st Annual Meeting

Become a Teller for the Director Election

**“Watts” Inside**

Message from Ken Maleski 3

Switch on the Savings with LEDs 3

Thunderstorm Safety 4

Local Teens Selected for Youth Tour 4

81st Annual Meeting of the Members 5

Tellers Needed for Election 5

Key Lime Tart in Sugar Cookie Crust Recipe 6

**Board of Directors**

Jody P. Weaver  
*President*

Kenneth Durrett  
*Vice President*

Althea M. Smith  
*Secretary/Treasurer*

William J. Eichner  
Kenneth D. Etzel  
Nancy Lendyak  
Bette D. Walters  
Richard L. Weaver



Photo by Maarten van den Heuvel on Unsplash

**A Gift of Light ... Bulbs**

*by Matthew Boshaw, CEO & General Manager*

The future of lighting is here! Well — it has actually been here for a while. Light emitting diode (LED) bulbs have been on the market for some time and have become very popular. The technology supporting varied applications of these bulbs has continued to advance and has proven itself a viable alternative to incandescent bulbs. As an example, in 2017 Central Electric Cooperative (CEC) began replacing failed yard lights with an LED equivalent. This particular application provides superior lighting with significantly lower electricity consumption.

Some of you may have already received a small box from CEC delivered by your mail carrier; others will be receiving it soon. Inside there are four free, Energy Star-certified, 60-watt equivalent LED bulbs. That’s right — the bulbs

are free, compliments of CEC.

The LED bulbs are part of an electric cooperative energy-efficiency program underway across Pennsylvania and New Jersey. A similar article describing this program will be sent by every electric cooperative to its respective members over the next month or so.

Lighting technology has advanced so rapidly that the installation of each of these LED bulbs is expected to save you \$6.22 per year, which is more than \$140 in electricity costs over the life of the bulb (estimated to be about 23 years at average use). That’s because an LED bulb improves lighting efficiency by 80 percent over traditional incandescent bulbs.

Eighty percent is a lot. It’s enough of a difference that we are encouraging you to take an unusual

***A Gift of Light ... /Page 2***

## *A Gift of Light ... /From Page 1*

step. As soon as you receive your free LED bulbs, select four of your most-used incandescent bulbs and replace them immediately. This is an important part of the program. Don't wait to replace those bulbs, the sooner you install them, the sooner your usage decreases.

Most of us don't spend a lot of time thinking about our lightbulbs, at least until one leaves us in the dark. But you will begin saving money the minute you install your new LED bulbs. What could be better than installing free bulbs that shine brighter, last longer and are less expensive to use than your current incandescent bulbs?

The benefits to the members of this lightbulb initiative are obvious, but you may wonder what benefit the cooperative gains from giving all members LEDs. The answer is that we purchase the electricity we provide to you — our members — from Allegheny Electric Cooperative (Allegheny), a Harrisburg-based cooperative owned by the 14 distribution cooperatives in Pennsylvania and New Jersey. Allegheny owns a hydroelectric plant and 10 percent of a nuclear power plant, and together with some long-term hydropower contracts, these sources provide about two-thirds of the power needed for the cooperatives. The remainder is purchased on the open market, where the price can fluctuate significantly.

When cooperative members across the two states install the new LED

bulbs, it will reduce the amount of power Allegheny must purchase from the open market, which in turn will ultimately decrease costs for local cooperatives. CEC will pass those savings along to you — our members — through a lower rate than would otherwise be possible.

The LED is one of the most energy-efficient lighting technologies available today. LED bulbs — which last longer, are more durable, and offer comparable or better light quality than other types of lighting — have the potential to change the future of lighting.

If you haven't already received your gift of light from the cooperative, watch your mailbox and remember, your savings begin the day you install your new LED bulbs.

“As soon as you receive your free LED bulbs, select four of your most-used incandescent bulbs and replace them immediately. This is an important part of the program. Don't wait to replace those bulbs, the sooner you install them, the sooner your usage decreases.”

Matt Boshaw, CEO & General Manager

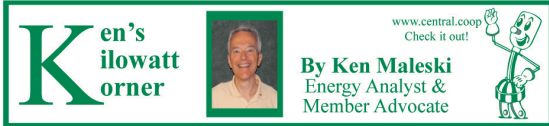
### **Don't Forget to Enter Our Photo Contest!**

**Entries are due by June 15. Prizes will be awarded for the top three winners: \$100 first place, \$50 second place and \$25 third place.**

**Members vote for the top five photos from June 18 to Aug. 2. Voting for the top three photos begins Aug. 6.**

**Visit [www.central.coop](http://www.central.coop) for more information.**

# Power Lines



It is with great pleasure that I introduce Laura Hensley, member energy specialist, and her new column titled Meter Readings.

Laura has been highly involved with energy use for eight years. The time has come for me to move

on to a new role. I appreciate the many positive comments I have received on Ken's Kilowatt Korner.

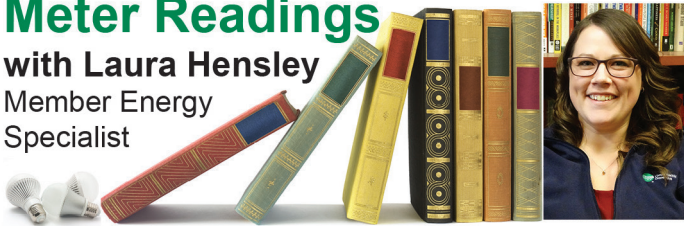
Our tradition is to service. I am confident that Laura's fresh, new insight will continue that great tradition.

Sincerely,  
Ken Maleski

## Meter Readings

with Laura Hensley

Member Energy Specialist



Switching to LED bulbs might be the easiest and most inexpensive way to reduce energy usage in your home. The average household has 70 light bulbs and nearly 60 percent of sockets in the U.S. still contain incandescent bulbs ([energystar.gov/lighting](http://energystar.gov/lighting)).

When you take a look at LED bulb packaging, you are going to notice some new features. The package now has labeling designed to help you understand what you are really purchasing and resembles a nutrition label.

The standard of buying bulbs by wattage, a measurement of energy usage, will one day be a thing of the past. LED bulbs are measured by brightness, or lumens. The more lumens, the more light you will have.

A 60 Watt incandescent bulb will typically be replaced by a bulb that offers 800 lumens and uses about 9 Watts. A brighter 100 Watt incandescent bulb can be replaced by an LED bulb offering 1,600 lumens and uses about 14 Watts.

Energy Star bulbs last 15-25 times longer and labels will express a bulb's life expectancy and average yearly cost.

## Switch On the Savings with LEDs

Light appearance is measured in Kelvins (K). A bulb yellow in color (2,700-3,000 K) is considered warm and preferred for living spaces. While a white-blue colored bulb (3,600-5,500 K) is considered cool and preferred for reading.

### Lighting Facts Per Bulb

**Brightness** 800 lumens

**Estimated Yearly Energy Cost** \$1.08

Based on 3 hrs/day. 11¢/kWh  
Cost depends on rates and use.



**Life** ENERGY STAR

Based on 3 hrs/day 22.8 years

### Light Appearance



**Energy Used** 9 watts

Our membership can look forward to receiving free LED bulbs in the coming months from the cooperative. We encourage you to make the switch in your home with these LED bulbs to help us reduce energy consumption and save money in your home.

# SAFETY MATTERS

## Thunderstorm Safety

When thunderstorms are rolling your way, stay safe with these tips from the American Red Cross:

- Listen to local news or NOAA Weather Radio for emergency updates. Watch for signs of a storm, like darkening skies, lightning flashes or increasing wind.
- Postpone outdoor activities if thunderstorms are likely to occur. Many people struck by lightning are not where rain is occurring.
- If a severe thunderstorm warning is issued, take shelter in a substantial building or in a vehicle with the windows closed. Get out of mobile homes that can blow over in high winds. Stay away from windows.
- If you can hear thunder, you are close enough

- to be in danger from lightning. The National Weather Service recommends staying inside for at least 30 minutes after the last thunder clap.
- Avoid electrical equipment and telephones.
- Do not take a bath, shower or use plumbing.
- If you are driving, safely exit the roadway and park. Stay in the vehicle and turn on the emergency flashers until the heavy rain ends. Avoid touching metal or other surfaces that conduct electricity in and outside the vehicle.
- If you are outside and cannot reach a safe building, avoid high ground; water; isolated trees; and metal objects. Picnic shelters, dugouts and sheds are NOT safe.

## Local Teens Selected for Youth Tour

Five local high school juniors were recently selected to attend the June 2018 Electric Cooperative Youth Tour in Washington, D.C. The 2018 winners are: Shannon Adams, Karns City High School; Kyleigh Craddock, Clarion Area High School; Emilee Klinger, A-C Valley High School; Noah McLean, Moniteau High School; and Katie Sherman, Keystone High School.

They will join over 1,500 students from across the nation to see the U.S. Capitol, meet with congressmen, tour national monuments and memorials, and visit the National Zoo and Smithsonian museums. Students learn about electric cooperatives, U.S. government and history, and attend educational seminars.



Shannon Adams



Kyleigh Craddock



Emilee Klinger



Noah McLean



Katie Sherman

## Mark Your Calendar for Our 81st Annual Meeting of the Members

Name: \_\_\_\_\_

Address: \_\_\_\_\_

Account No: \_\_\_\_\_

Phone No: \_\_\_\_\_

Please reserve \_\_\_\_\_ dinners for me.

I will be bringing \_\_\_\_\_ children with me.

Only children ages 5 to 10 will be permitted into Children's Entertainment.

*By attending the annual meeting, I grant CEC permission to use my likeness in photographs in any and all of its publications, including internal and external newsletters and website entries, without payment or other consideration.*

**Return coupon by July 31, 2018 to:  
Central Electric Cooperative, Inc., 716 Route 368,  
P.O. Box 329, Parker, PA 16049-0329**

Attend our Annual Meeting on Friday, Aug. 24 at Whitehall Camp & Conference Center, in Emlenton, at 4:30 p.m. for a live performance by Keep Off the Grass (a local bluegrass group), a delicious meal from Kentucky Fried Chicken, and a chance to win a number of door prizes. The event also offers a health fair, drone demonstrations, information on solar panels, and more! Children ages 5 to 10 will enjoy a variety of activities and a prize specifically for them!

You can make reservations for the meeting and for children's entertainment by completing the adjacent form, visiting our website or calling us at 800-521-0570. Registration deadline is July 31.

For more information, directions or to check out the agenda visit [www.central.coop](http://www.central.coop).



## Tellers Needed for Election

The cooperative's board of directors is seeking CEC members to serve as tellers for the annual election on Aug. 24. The committee tabulates director election ballots that are received by our Judge of Elections prior to the meeting. Tellers must arrive by 4 p.m.

Eight tellers are needed: one from Armstrong

County, two from Butler County, two from Clarion County, one from Forest County and two from Venango County. If more members volunteer than are needed, a drawing will be held by our Judge of Elections. If there are no volunteers, the cooperative directors will appoint needed tellers.

### 2018 Tellers Committee

Name: \_\_\_\_\_

Address: \_\_\_\_\_

Please reserve \_\_\_\_\_ dinners for me.

Account No: \_\_\_\_\_ Phone No: \_\_\_\_\_ County: \_\_\_\_\_

**Return coupon by June 30, 2018 to:  
Central Electric Cooperative, Inc., 716 Route 368, P.O. Box 329,  
Parker, PA 16049-0329**

## Recipe of the Month

### Key Lime Tart in Sugar Cookie Crust

**Crust:**

- 1/3 cup sugar
- 1/2 cup butter, softened
- 1-1/4 cup flour
- 2 tablespoons milk
- 1 teaspoon vanilla
- 1 tablespoon grated lime zest

**Filling:**

- 1 cup sugar
- 2/3 cup lime juice
- 1 tablespoon lime zest
- 3 whole eggs
- 3 egg yolks
- 6 tablespoons butter

**Directions:** Combine all crust ingredients and press onto bottom and up sides of greased 10 inch quiche pan. Bake at 400 degrees for 15-20 minutes. Cool completely. Combine sugar, lime juice, and zest in saucepan. Cook over medium heat 1-2 minutes until sugar is dissolved. Reduce heat to low. Beat eggs and yolks in small bowl. Gradually stir egg mixture into hot sugar mixture. Continue cooking, stirring constantly, 6-8 minutes or until thickened. Remove from heat. Stir in butter one tablespoon at a time. Cool 15 minutes. Pour filling into crust. Refrigerate at least two hours. Serve with whipped cream.

*Thank you to Linda Knott for submitting this recipe!*

### Send in your recipes to be shared today!

Send Recipes to: Renee Tritten at [rtritten@central.coop](mailto:rtritten@central.coop) or mail to CEC, P.O. Box 329, Parker, PA 16049

### CEC Management Team

Matthew P. Boshaw  
CEO & General Manager

Dennis W. Beggs  
Director of Finance and  
Accounting/CFO

Christopher W. Kossman  
Director of Information Technology

Stephanie Deal  
Director of Human Resources

Fred E. Terwilliger  
Assistant General Manager/COO

Lisa A. Hoover  
Director of Member Services

## Read Power Lines and Win!

Last Issue's Winner:

**Milton Darling of Boyers**

Last Issue's E-Winner:

**Leroy Ace of Knox**

Read Power Lines and win a \$25 credit on your monthly electric bill by completing and returning the quiz below. You can also have a chance at another \$25 bill credit by submitting a quiz online at [www.central.coop](http://www.central.coop).

If you don't have access to the Internet, indicate that on the quiz and we'll also enter you in the online drawing. Just complete and enclose the quiz and personal information below and return it with your monthly payment.

**1. True or False:** It has to be raining for you to be struck by lightning.  
**Answer:** \_\_\_\_\_

**2. True or False:** Switching to LED bulbs is the most expensive way to reduce energy usage in your home.  
**Answer:** \_\_\_\_\_

**3. True or False:** An LED bulb improves lighting efficiency by 80 percent over traditional incandescent bulbs  
**Answer:** \_\_\_\_\_

**How are we doing?** (no wrong answer)  
\_\_\_\_\_  
\_\_\_\_\_  
\_\_\_\_\_

**Name:** \_\_\_\_\_

**Phone:** \_\_\_\_\_ **Acct. #:** \_\_\_\_\_



**Central Electric Cooperative**

A Touchstone Energy® Cooperative

716 Route 368, P.O. Box 329, Parker, PA 16049

Newsletter Editor: Renee Tritten