

Inside:

85th Annual Meeting Recap

Youth Tour is back in 2023!

Enter our Christmas Lights Contest

“Watts” Inside

- CEC’s 85th Annual Meeting of the Members 3
- CEC Holiday Closures 3
- Reminder: Enter our Christmas Lights Contest! 3
- Seasonal Safety 4
- The Value of Electricity 4
- Youth Tour is Back in 2023! 5
- Suds and Savings 5
- Yam Bake Recipe 6

Board of Directors

Nancy Lendyak
President

Robert Smith
Vice President

Althea Smith
Secretary/Treasurer

John Campbell
Kenneth Durrett
Kenneth Etzel
Jody Weaver
Richard Weaver

PowerLines

Photo by Susan Seibert of Utica

The Facts About Net-Metering

by Matthew Boshaw, CEO & General Manager

You might not know what I am referring to when I mention net-metering. Net-metering is the manner in which Central Electric Cooperative (CEC) accommodates the interconnection of qualifying renewable facilities, typically solar, by individual homes or businesses to the distribution grid.

As an electric cooperative, CEC is not included in the law that requires electric distribution utilities to accommodate net-metering but we, and all the cooperatives in Pennsylvania, have policies that allow our members to participate should they choose to. CEC created its policy in 2006. Our policy limits the size of the facility that is interconnected to reflect the intent of net-metering, to reduce the generation supply required, and offset the member’s usage. For several years, no one availed themselves of the process and then a few early adopters

installed systems. When government subsidy became available to those interested in installing systems, we began to see a greater take rate, but up until a few years ago we still had very few participants. Throughout the last few years, we have seen significant growth in the number of interconnected systems — up to about 80 now. While 80 is still not a substantial percentage of our 25,500 accounts, the increased growth has our attention.

This growth has required CEC to begin discussions about how we need to change our net-metering policy and practices to ensure all members are treated fairly. The time and administration associated with the growing demand creates cost and schedule impacts for our members. Additionally, accounts that have net-metering facilities are directly subsidized by those that do not. This is an important point that is not

The Facts ... /Page 2

The Facts ... /From Page 1

“This growth has required CEC to begin discussions about how we need to change our net-metering policy and practices to ensure all members are treated fairly.”

Matt Boshaw, CEO &
General Manager

always immediately apparent.

Our residential rate is broken into three parts — a basic charge, a distribution energy charge, and a generation and transmission (G&T) energy charge. The two distribution components are intended to cover the cost of the distribution system and those costs exist whether a member uses power from our system or not. You can think of it as the cost of having the system connected to your home or business. The generation costs, the G of the G&T, are only there when members use power, and we must pay for the energy. So, in cases where members remain connected to the system but use no electricity, they are not covering the portion of the distribution system costs associated with their access. As those costs exist whether power is used or not, the remainder of our membership is covering those costs. This subsidy is mitigated somewhat by the fixed base charge, but it does not cover the total expense. This problem tends to impact lower-income members to a greater extent as, thus far, they have been least able to install interconnected facilities.

As you might expect, states that are more conducive to solar generation are further along this path than Pennsylvania. They have identified the need for net-metering members to pay the necessary costs associated with the distribution system. They have changed legislation to allow net-metering to be altered so the costs members with net-metering

are offsetting are for the generation savings and not for the maintenance of the distribution system.

CEC is reviewing our policies and practices regarding net-metering and the costs associated with them and will be making changes to ensure that each member is paying the appropriate amount to cover costs. As a distribution cooperative, we are generation agnostic in that we are happy to accommodate a member’s desire to generate their own resource. But, as more members avail themselves of that option, we are obligated to revise our rate to make sure those choices do not harm the remainder of our membership. These updates are pending and we will keep you informed as they come.

You have likely been reading and hearing a lot about large solar installations or “solar farms” being discussed in our area. I think it is important to note that these are not net-metering facilities and do not have the same impact on our membership as net-metered facilities. These are considered independent power producers and simply access the larger grid through our system. This article discusses this issue at a high level and does not get into the details of individual circumstances, so, if you have questions, please let us know and we will make sure you have the information you need.

CEC's 85th Annual Meeting of the Members

On Aug. 19, CEC again held a nonpublic, annual business meeting. It was again out of an abundance of caution that the meeting was held without the physical presence of members (a video of the meeting is available on CEC's website). However, CEC did have 1,754 members participate through the expanded ballot, which had been available on CEC's website since July.

At the meeting, CEC board members and staff highlighted how 2021 was a positive, productive year. "2021 was clearly a year of transition, and 2022 is proving to be the same," CEO & General Manager, Matt Boshaw, said. "Our commitment to continuous incremental improvement has allowed us to make real progress and catch up in areas that were interrupted in 2020." Despite challenges, Boshaw noted that CEC was also able to meet or exceed its 2021 goals.

Turning to financial stability, Boshaw said CEC had a very strong 2021, where members saw no rate increase and there is no plan for an increase in 2022. This was a relief to members as CEC's neighboring investor-owned counterparts had multiple significant rate increases in 2022.

Also during the meeting, Nancy Lendyak of Armstrong County and Bob Smith of Butler County were re-elected to CEC's Board of Directors in uncontested races. Then at the September board

meeting, CEC's directors elected officers: Nancy Lendyak, board president; Robert Smith, vice president; and Althea Smith, secretary/treasurer. Additionally, Althea Smith was elected to a two-year term to serve as CEC's Pennsylvania Rural Electric Association Member Delegate and Richard Weaver is currently in the second year of his two-year term serving as the Allegheny Electric Cooperative Member Delegate.



From left: Robert Smith, re-elected director for Butler County; Matt Boshaw, CEO & General Manager; Nancy Lendyak, re-elected director for Armstrong County

CEC is currently working on what the 2023 annual meeting event will look like in this post-pandemic world. Details on the 2023 event(s) will be released as soon as possible. But we hope to see everyone in person in 2023!

CEC Holiday Closures

Nov. 24 for Thanksgiving
(normal hours resume Nov. 25)

Dec. 23 at noon in observance of Christmas Eve

Dec. 26 in observance of Christmas Day
(normal hours resume Dec. 27)

Dec. 30 at noon in observance of New Year's Eve

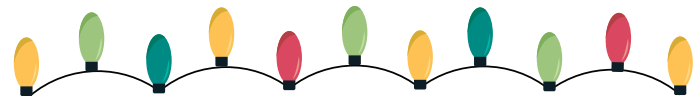
Jan. 2 in observance of New Year's Day
(normal hours resume Jan. 3)



Reminder: Enter our NEW Christmas Lights Contest for a chance to win!

Enter a photo or video of your display before Dec. 9 for a chance to win a \$500 bill credit, a \$250 credit or a \$100 bill credit!

Visit www.central.coop for more information





The Safety Linke



Don't be a stranger, to electrical danger.



Manager of Safety & Loss Control

Dylan Linke

Seasonal Safety

The final quarter of the year sparks interest for many outdoor enthusiasts living in Western Pennsylvania. The cooler temperatures and falling leaves have many hunters taking to the woods to pursue their passion. Oddly enough, safety isn't always the first thing on our minds this time of year.

When it comes to hunting safety, there are endless topics to discuss. To appeal to the largest audience, I want to discuss the importance of wearing fall protection and tree stand safety tips, as well as a reminder of the blaze orange requirements from the Pennsylvania Game Commission (PGC).

To reduce the number of tree stand related injuries this season, users are reminded to always wear a fall protection harness while hunting from an elevated platform. Wearing fall protection is the best way to prevent hitting the ground and being seriously

injured if you were to fall. The transition into and out of a tree stand is typically the most dangerous. Always wear a harness and ensure it remains properly attached to the tree when hunting from, setting up, or taking down a tree stand.

Whether hunting from a tree or on the ground, there are varying requirements set forth by the PGC regarding the use of blaze orange apparel relating to each season and the methods of hunting. It is always important to verify the season upon us as well as what the visibility requirements are for that time of year.

A best practice is to wear high visibility blaze orange garments or articles of clothing any time you are enjoying the outdoors this time of year — regardless of whether you are there to hunt or not. On behalf of all of us at CEC, we would like to wish all outdoor enthusiasts a safe and successful season!



*Based on 13 cents per kWh.

Youth Tour is Back in 2023!

CEC is happy to once again invite high school juniors to attend Youth Tour, a once-in-a-lifetime, all expenses paid trip to Washington, D.C.! Students will join participants from co-ops around the country from June 18-23 to experience all the nation's capital has to offer.



Leadership is the Focus.

From monuments and memorials to meetings with Congress, the focus of Youth Tour is LEADERSHIP.

Cooperation is the Purpose.

Electric cooperatives power communities and empower their members to improve their quality of life. This spirit of cooperation is shared throughout the Youth Tour experience.



History is the Guide.

Students will see the U.S. Capitol, tour historical sites, visit the Smithsonian and Kennedy Center, meet with congressmen,



and much more! We believe students should see their nation's capital, learn about the political process and interact with their elected officials.

All high school juniors who reside in a home receiving electric service from CEC are eligible. All application requirements must be completed by Feb. 3, 2023. Additional information about Youth Tour is available at www.youthtour.coop.

Finalist are not only entitled to the trip to D.C., but are also eligible for special scholarships and national recognition.

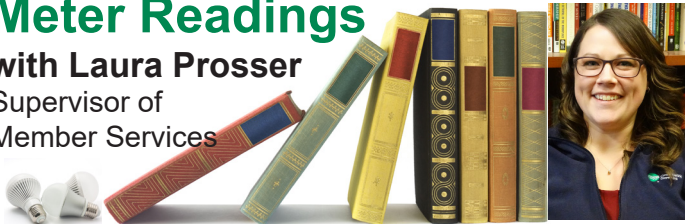
To learn more or to apply, visit www.central.coop or call us at 800-521-0570.



Meter Readings

with Laura Prosser

Supervisor of
Member Services



Your clothes washer and dryer can account for a significant portion of energy consumption. There are several easy ways to save energy (and money) in the laundry room. The Department of Energy recommends the following tips for saving:

1. Switching from warm water to cold water can cut one load's energy use by more than half.
2. Wash full loads. Your washing machine will use the same amount of energy no matter the size of the clothes load, so fill it up if you can.
3. Use the washer's high-speed or extended spin cycle. This setting will remove more moisture

Suds and Savings

before drying, reducing your drying time.

4. Loads will dry faster if you separate heavier cottons, like towels, from lightweight clothing.
5. Save energy with the "cool down" cycle — clothes will finish drying with the remaining heat.
6. Use lower heat settings to dry clothing. Regardless of drying time, you'll still use less energy.
7. Using dryer balls will help keep clothes separated for faster drying, and they can help reduce static.
8. Switch loads while the dryer is warm to use the remaining heat from the previous cycle.
9. Clean the lint filter after each drying cycle. If you use dryer sheets, scrub the filter once a month with a toothbrush to remove excess buildup.
10. Purchase ENERGY STAR® rated washers and dryers. New washers and dryers that receive the ENERGY STAR® rating use about 20% less energy than conventional models.

Recipe of the Month

Yam Bake

Ingredients:

- Two, 29 ounce cans of yams, drained
- 1 cup sugar
- 2 eggs, beaten
- 1 teaspoon cinnamon
- 1/2 cup butter, melted

Directions:

Mash potatoes with a fork in a mixing bowl. Then mix in the rest of the ingredients. Spoon into a greased casserole dish.

Topping Ingredients:

- 2 cups Ritz crackers, crushed
- 1/4 cup brown sugar
- 1 teaspoon cinnamon
- 1/2 cup butter, melted

Directions:

Mix together topping ingredients, then sprinkle over the casserole. Bake uncovered at 350 degrees for 60 minutes.

Thank you to Dennis Knott for submitting this recipe!

CEC Management Team

Matthew P. Boshaw
CEO & General Manager

Chester Conti
Director of Finance and
Accounting/CFO

Christopher W. Kossman
Director of Information Technology

Stephanie Deal
Director of Human Resources

Fred E. Terwilliger
Assistant General Manager/COO

Lisa A. Hoover
Director of Member Services

Read Power Lines and Win!

Winners for the Newsletter Survey will be announced in December.

Read Power Lines for a chance to win a \$25 credit on your monthly electric bill by completing and returning the quiz below. You can also have a chance at another \$25 bill credit by submitting a quiz online at www.central.coop.

If you don't have access to the internet, indicate that on the quiz and we'll also enter you in the online drawing. Just complete and enclose the quiz and personal information below and return it with your monthly payment.

1. True or False: Net-metering is the manner in which CEC accommodates the interconnection of qualifying renewable facilities.

Answer: _____

2. True or False: Wear low visibility black garments any time you are outdoors this time of year.

Answer: _____

3. True or False: Washing small loads of laundry uses less energy than full loads.

Answer: _____

How are we doing? (no wrong answer)

Name: _____

Phone: _____

Acct. #: _____



Central Electric Cooperative

A Touchstone Energy Cooperative

716 Route 368, P.O. Box 329, Parker, PA 16049

Newsletter Editor: Kessa Moore